



The Sophia

The Whitby

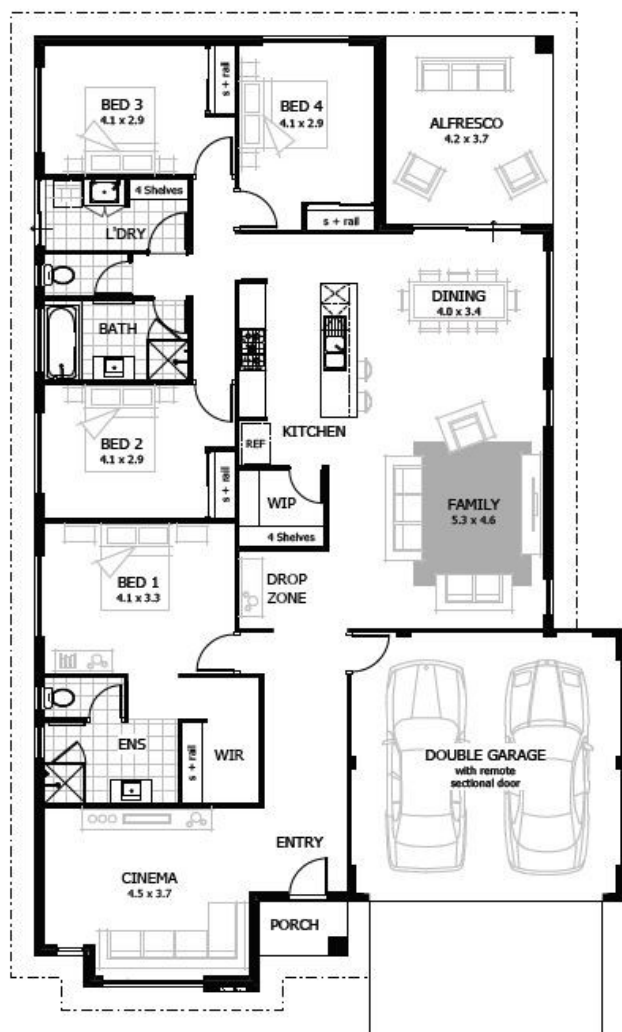
Address: Lot 580/582 Heartwood Boulevard

*Siteworks and Turnkey

Inclusions*

\$460,000

Total Area 240m2
Width 15m
Length 30m



Package Features

- ◆ Panasonic ducted reverse cycle air conditioning
- ◆ LED lights throughout
- ◆ 31c high ceilings to Main Living areas
- ◆ 20mm Caesarstone benchtops Kitchen, Bathroom, Ensuite and Laundry
- ◆ Carpet to all Bedrooms and Cinema
- ◆ Floor Tiling to Entry, Passage and Main Living areas
- ◆ Vertical Blinds excluding wet areas
- ◆ Drylining to internal walls including 2 coat paint system
- ◆ Siteworks for A class & Soakwells included

To enquire, call 0402 111 762

Zalini Rosli

www.celebrationhomes.com.au

celebration
MORE TO CELEBRATE HOMES

We're proudly part of the ABN Group, Australia's leader in construction, property and finance, and owned by Dale Alcock.

A = N
GROUP

Please visit www.celebrationhomes.com.au/disclaimers for full terms & conditions. Celebration Homes Pty Ltd. BC 9780. Images for illustrative purposes only. Landscaping, fencing and pool not included.